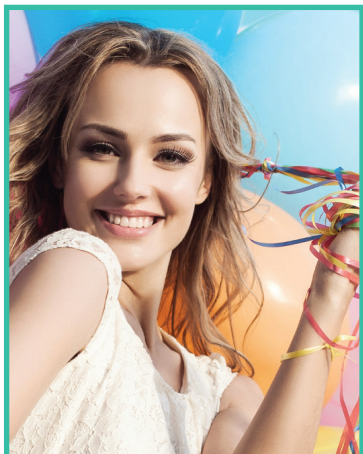




Wristband Sizing Chart

Jan 3, 2014



Handband® Wristbands are available in up to five sizes: Extra Large, Large, Medium, Small and Child X Small.

What to order:

Adults and teenagers - Large is our most popular size and is ideal for most adults and teenagers. (Check size bars below.)

Children 5 to 12 - Most children this age fit Medium. (Check size bars below.)

Children 5 & under - Use Small or Child X Small. (Check size bars below.)

The above are recommendations only. Please measure the wrist to confirm!!!

Extra Large wristbands are 8.66" (220 mm) in size.



Large wristbands are 7.9" (202 mm) in size.



Medium wristbands are 7.1" (180 mm) in size.



Small wristbands are 5.9" (150mm) in size.



Child X Small wristbands are 5.1" (130mm) in size.



Print this document at 100% for reference, then cut on the dotted line and wrap the bar around the wrist to measure.

